

STAGE COACH PLAYERS PROUDLY PRESENTS

Music and Lyrics by Stephen Sondheim
Book by George Furth

Company

A Musical Comedy

Originally Produced and Directed
on Broadway by Harold Prince
Orchestrations by Jonathan Tunick

You're Invited.....

August 8, 9, 10, 15, 16, 17, 2013
7:30 p.m.

August 11, 18, 2013
2 p.m.

815-758-1940 or
stagecoachers.com for tickets

A comedy about
the comfort and
complications that
comprise the
complexities of
commitment:
Company.

Directed by Ryan Morton
Musical Direction by Nika Plattos

Please Note: Not all content is suitable for children.



**STAGECOACH
PLAYERS**

126 S. Fifth Street
DeKalb, IL 60115

Design donated by Trittenhaus Design

Company is presented through special arrangement with Music Theater International (MTI). All authorized performance materials are also supplied by MTI, 421 West 54th Street, New York, NY 10019. Phone 212-541-4684 FAX: 212-397-4684. MTIShows.com

MORE ACTIVE.
LESS LIMITS.



The Center for Joint Care at Kishwaukee Community Hospital is the **region's premier destination** for joint replacement procedures. Kish Hospital uses three-dimensional guided technology allowing our surgeons to be more precise in aligning the new joint with the entire limb.

Our program's evidence-based approach gets you back to your favorite activities quicker. Over 90% of our patients are discharged home within 2-3 days, without the need for an inpatient rehabilitation stay at a nursing home.

Learn more about the Center for Joint Care and hear patient success stories at www.kishjointcenter.org or call 815.748.2967.

CENTER FOR JOINT CARE



Stage Coach Players dedicate
the 2013 season to the fond memory of

 Lana Marten 

Company

ACT I

“Overture” Company (except Robert)
“Company” Company
“The Little Things You Do Together” Joanne, Amy, David,
Jenny, Larry, Paul, Peter, Susan
“Sorry-Grateful” Harry, David, Larry
“You Could Drive A Person Crazy” Kathy, April, Marta
“Have I Got A Girl For You” Husbands, Wives
“Someone Is Waiting” Robert
“Another Hundred People” Marta
“Getting Married Today” Sarah, Paul, Amy, Company
“Marry Me A Little” Husbands, Wives, Robert

15-minute Intermission

ACT II

“Side By Side By Side” Robert, Husbands, Wives
“What Would We Do Without You?” Robert, Husbands, Wives
“Poor Baby” Jenny, Sarah, Wives
“Have I Got A Girl” (Reprise) Husbands
“Barcelona” Robert, April
“The Ladies Who Lunch” Joanne
“Being Alive” Robert

SETTING

*The scenes take place in contemporary New York City.
Except for the very beginning and the very end, every scene is a
memory or vision inside Robert's head.*

Cast

Robert	Jason Williams
Sarah	Kim Moorman
Harry	Greg Anderson
Susan	Michele McClane
Peter	Dominic Johnson
Jenny	Jennifer Snow
David	Kevin Pajor
Amy	Katie Wolf
Paul	Tom McManamon
Joanne	Barb McCaskey
Larry	Lawrence Nepodahl
April	Sara Schuneman
Kathy	Keely Smith
Marta	Ashley Davis

ENJOY DINNER AND A SHOW!



Rosita's Mexican Restaurant

*Located just around the corner
from Stagecoach Theatre!*

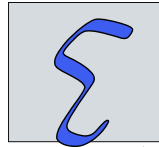
642 East Lincoln Highway
DeKalb, Illinois 60115

815.756.1201

Eduardo's Restaurant

214 East Lincoln Highway
DeKalb, Illinois 60115

815.758.2677



Eduardo's
R-e-s-t-a-u-r-a-n-t

Show your Company ticket at either
Eduardo's or Rosita's and receive a

FREE APPETIZER

with purchase of a meal.

Appetizer value up to \$7.00. Valid from Thursday, August 8th to Sunday, August 18th. Dine-in only. One free appetizer per table per visit.

Crew

Director	Ryan Morton
Music Director	Nika Plattos
Stage Manager	Dan Hyde
Producer	Jan Kuntz
Choreographer	Melissa Rosenberg
Set Design	Sean Henson
Master Builder	Dan Kuntz
Set Construction	Sean Henson, Dan Hyde, Dan Kuntz, Joseph Kuntz, Jesse Martin, Ryan Morton, Dave Pearson
Master Painter	Sean Henson
Painters	Jesse Martin, Barb McCaskey, Ryan Morton, Nika Plattos, Sara Schuneman, Keely Smith, Jason Williams
Costume Design	Rebecca Gardner
Costume Advisor	Joanne Gardner
Light Design	Michael Landshaft
Sound Design	Bridget Johnson
Technical Advisor	Tom Grady
Spotlight Operator	Jesse Martin
Properties	Joanne Landshaft
Graphic Design	Wendy Tritt
Photography	Joanne Landshaft, Alexandra Plattos
Hair/Make-Up Design	Keely Smith
Stage Crew	Josh Smith, Vince Virtue
Karate Staging	Michael Augsburger

Company is here - but not for dinner.



Jerry & Annette Johns

Orchestra

Keyboard	John Feken, Denny Vaupel
Clarinet/Saxophone	Michael Armstrong
Saxophone	Jay Monteiro
Clarinet	Kim Moorman
Clarinet/Saxophone.	Jimmy Zucker
Trumpet	Brian Balika
Trombone	Brett Balika
Violin	Isaac Parra
Viola	Becca Vidales
Cello	Ashley Hofer
Bass	Steve Lorence
Percussion	Evan Taylor



Funeral Directors

Richard N. Anderson

Barry S. Melton

Service Assistant

Mervin V. Mathison

Advanced Planning

Candy L. Anderson

Tel: (815) 756-1022
www.andersonfuneralhomeltd.com

2011 South Fourth Street
DeKalb, Illinois 60115

Cast



Greg Anderson (Harry) – has been a member of SCP for 22 years. His first role was as the Inspector in *Witness for the Prosecution*, but he usually plays the role of comic side-kick in comedies or musicals and was last seen as Pig #2 in *Shrek* earlier this summer (Power to the Piggies!!). He has served as President, Board Member and Fundraising Chair. In 2003 he was named "Stagecoach of the Year". In real life, he is Director of Career Opportunities & Development as well as an adjunct member of the faculty at NIU's College of Law.



Ashley Davis (Marta) – has just returned from a year of working on the Chicago River as a first mate. She attended Lincoln College and majored in theater. This took her all over the United States as a member of the show choir, Lincoln Express. Her first show with Stage Coach was *Joseph and the Amazing Technicolor Dreamcoat*. Her favorite role at Stage Coach was Fruma Sarah in *Fiddler on the Roof*. Some of her other favorite roles were Ado Annie in *Oklahoma*, the Witch in *Into the Woods*, and Logainne Schwartzandgrubenniere in *The 25th Annual Putnam County Spelling Bee*. When she is not performing on stage, she's skating with the Aurora 88's Roller Derby Team as "Boobie Trap". She hopes you enjoy this show as much as she's enjoyed bringing Marta to life.



Dominic Johnson (Peter) – is very fortunate to have the opportunity of being cast in *Company*. It has been a wonderful experience getting to learn with and be a part of this talented cast. He would like to thank Dan Hyde for recommending him to audition, Ryan Morton for helping him discover his character, and the rest of the cast and crew for being great new friends! This is Dominic's third show with Stage Coach, having previously been in *Shrek* and *Fiddler on the Roof*. Some of his favorite parts have been The Engineer in *Miss Saigon*, Motel Kamzoil in *Fiddler on the Roof*, Corny Collins in *Hairspray*, Ichabod Crane in *Sleepy Hollow*, Horton the Elephant in *Seussical*, and Emmett Forrest in *Legally Blonde*. Enjoy the show!



Barb McCaskey (Joanne) – Barb believes the little things this cast does together makes for perfect relationships, and she's so happy to be part of it. Barb has been involved in Stage Coach Players for nearly 20 years, and she's a former SCOTY recipient. Barb has also had the good fortune to have been on stage at Steel Beam Theater in St. Charles, Clock Tower Theater and New American Theater in Rockford and Elgin Community College Theater. Favorite roles include Eva Peron in *Evita*, The Witch and The Baker's Wife in *Into The Woods*, Mary in *Merrily We Roll Along*, The Countess in *A Little Night Music* and The Narrator in *Joseph and the Amazing Technicolor Dreamcoat*. Husband George makes marriage a joy, and son Conor graduated Notre Dame in May and is working in New York.



Michele McClane (Susan) – has been at Stage Coach Players for the past three years. In that time she's been involved in numerous shows (both on and off stage) and made some amazing friends. On the homefront, Michele has a very supportive family that doesn't fuss when she's doing yet another show. She sends her love and thanks to her wonderful family.



Thomas McManamon (Paul) – has been doing shows with Stage Coach since 2007 when he debuted on our stage in *High School Musical*. Tom since has been in a number of musicals with Stage Coach, the most recent one being *Guys and Dolls* in the summer of 2012. Tom is very grateful for the opportunity to be a part of this production. He is also . . . “so excited to be a part of such a fun cast of people; they've been so welcoming and helpful through this whole process, and I know we are going to have a great show!”

Voted Best Physical Therapists!

**Freedom to Move -
We work for you and the doctor of your choice!**

Your choice of 4 locations:
Resource Parkway - DeKalb Lincoln Highway - DeKalb
Rochelle Genoa

northernrehabpt.com 815.756.8524

Sycamore DeKalb Genoa Elburn Sandwich Leland Serena

banknbt.com
815-895-2125
Member FDIC



Kimberly Moorman (Sarah) – is a four-year member of SCP and is excited to be back on stage in *Company*. Kim is currently serving her first term as a board member for the organization. You may recognize her from her previous roles at SCP: Dolly Levi in *Hello Dolly* and Rona Peretti in *Spelling Bee*. Being involved in theater for 20 years, there are too many productions to mention, but outside of Stage Coach, her favorite stage role has been Marion in *The Music Man*. Kim has extensive singing experience earning her Masters of Music in Vocal Education and Vocal Performance Certificate from NIU in 2008. She sang in Europe as a member of Voci d'estate, a summer program for emerging opera singers and also has been a member of the Philader Consort of Dixon. When not on stage, she teaches choir and general music and directs the musicals at Huntley Middle School in DeKalb. Most recently she directed the hugely successful, *Aladdin, Jr.* Despite all her credits, the role she most enjoys is the role of mom to her 18-month-old son, RJ, and wife to husband, Aaron. She wishes to thank Ryan & Nika for their fabulous direction.

HyVee®

EMPLOYEE OWNED

*A helpful smile
in every aisle.*

**2700 DeKalb Ave.
Sycamore
815-756-6174**



www.hy-vee.com
Visit us online today!



Celebrating our second year
in partnership with
Chef Chad and Manager Rob

WELCOME

**Stage Coach Theatre
Patrons**

Join us for dinner before theater.
Return afterward to complete your evening.
Dinner is served from 4:00 pm on.
The kitchen closes when the orders stop.

226 East Lincoln Highway • Downtown DeKalb
815.217.0990 • Reservations suggested
www.tapalaluna.com



Lawrence Nepodahl (Larry) – has been with the Stage Coach Players for seventeen years. He has been in a myriad of shows that he truly enjoyed. He is very proud of the fact that he introduced radio drama/comedy to the organization and was the 2008 recipient of the SCOTY award. Lawrence works at Northern Illinois University's Holmes Student Center as an Audio Visual Technician. As for this fine production, he has enjoyed working with this vibrant group (director, cast, crew) and is happy to be reunited with his Queen Guinevere (to his King Arthur) from SCP's 1998 production of *Camelot*. Enjoy the show!



Kevin Pajor (David) – is thrilled to be making his Stage Coach debut in one of his all-time favorite musicals. He currently teaches social studies and runs the theatre program at Sandwich High School. He has been involved with Oswego's Limelight Theatre Company for the better part of a decade, in addition to playing the role of The Baker in *Into the Woods* at Illinois State University. Locally, he has appeared as an ensemble member in PR Productions' 24 Hour Theatre and taught Illinois Valley Theatre's High School Acting Workshop this past June. Kevin would like to thank his castmates and directors for the opportunity to be involved in such a powerful and meaningful production.



Sara Schuneman (April) – is thrilled to be a part of this incredibly talented cast and crew. She has been involved with over twenty past Stage Coach productions, both on and off stage, where past roles have included Olive Ostrovsky in *The 25th Annual Putnam County Spelling Bee* and Soul Girl in this past March's production of *Jesus Christ Superstar*. In her real life Sara works as an x-ray/MRI tech in DeKalb and Elgin. She would like to thank this great cast for being so much fun, the incredible crew for their hard work, her parents for looking after her dog while she was in rehearsals, and, most of all, Ryan and Nika for putting their faith in her and allowing her to be a part of their vision.

**STAGECOACH
PLAYERS**



Becky Beck's Jewelry Store
303 East Hillcrest Drive, DeKalb, Illinois 60115
815-758-3800
I/O Master Jeweler - Brilliance you Deserve



Keely Smith (Kathy) – has been involved with SCP for the last five years volunteering her services behind the curtain in hair, makeup, and wigs in many shows since 2008. She has enjoyed working behind the scenes to quietly bring shows together with her Stage Coach family and now is very excited to make her SCP debut on the stage as Kathy in *Company!* Keely would like to thank our director Ryan Morton for giving her the opportunity to branch out in this wonderful organization and also would like to thank our audience for keeping us company tonight! Enjoy!



Jennifer Snow (Jenny) – is excited to be returning to the stage in Stage Coach Players' *Company*. Jennifer has participated in multiple Stage Coach Players shows over the last decade, most recently stage managing *Shrek the Musical*. She has also managed the Box Office, been Recording Secretary on the SCP Board of Directors, been co-chair of the Playreading Committee, and organized the SCP Annual Membership Meeting and Banquet. Jennifer was also recently awarded the Stage Coacher of the Year (SCOTY) award for 2012. Thank you to Cason and Lily for letting Mom do what she loves and thanks to everyone in the cast and crew for an amazing time on an amazing show!



Jason Williams (Robert) – currently resides in Rockford, IL, and is the 7th grade science teacher at North Boone Middle School. He made his Stage Coach debut as Frankie in *Forever Plaid*. Some other previous productions include *Hairspray* (Corny Collins) and *Avenue Q* (Rod) at Starlight Theatre in Rockford, *Urinetown* (Bobby) at Engle Lane Theatre in Streator, and *Joseph and the Amazing Technicolor Dreamcoat* (Joseph) at 3M Productions in Mendota. Dancing for 13 years, Jason has performed with local studios and with Northern Illinois University's *The Nutcracker* (Snow King, Rat King, Russian, Spanish). During his collegiate years Jason was given the opportunity to work at Walt Disney World as a character performer in Orlando, FL. He has also served on the board of directors at Engle Lane Theatre and co-directed two youth musicals: *Guys and Dolls, Jr.* and *Fiddler on the Roof, Jr.*



Katie Wolf (Amy) – is thrilled to be playing one of her favorite musical theater roles in her first Stage Coach Players production! Though she has been on a theatrical hiatus for the past four years, she was a member of Secondary Dominance, an all-female a cappella group at Illinois State University. Her favorite past roles include Fantine in *Les Miserables* and Meg Boyd in *Damn Yankees!* She would like to thank the best carpool in the history of carpools for making the drives to DeKalb a lot less horrible and expensive, as well as her family for being truly awesome and supportive in absolutely every aspect of her life and for enduring the incessant, rapid chattering that came as a side effect of preparing for this exciting, challenging role.

STAGECOACH PLAYERS

Celebrating
25 Years
in Business



American
Title
Guaranty, Inc.

**AMERICAN TITLE
GUARANTY, INC.**

2045 Aberdeen Ct., Ste. B
Sycamore, IL 60178
Phone: 815-756-3611

**ASK YOUR LENDER, REALTOR
AND ATTORNEY TO CALL US
FOR YOUR REAL ESTATE
TITLE INSURANCE NEEDS**



**24-Hour
Emergency
Service**

815-758-5228
Serving DeKalb County

Break a Leg!



**ILINI SECURITY
SYSTEMS, INC.®**

RESIDENTIAL ■ COMMERCIAL

Gene R. Deisz
815/895-2476
www.alarm-u.com

*We mean to
Alarm-U*

Crew

Rebecca Gardner (Costumer) – attends Sycamore High School. She has helped costume many plays at Stage Coach Players. A *Funny Thing Happened On The Way To The Forum* was her first production and she most recently worked costumes and makeup for *Shrek, the Musical*. She has also done other costuming work including the *Magic Flute* at Northern Illinois University. *Company* is the first play she is the Chair of the costume department. She is very excited to be able to do this and thanks Ryan for the opportunity.

Sean Henson (Set Designer) – has been a Stage Coach Players member for the last ten years as a designer, director, actor, and puppeteer. His previous set design work was seen most recently in last summer's Stage Coach Players production of *Private Eyes*. He thanks his kids for lending him their blocks to work on this one.

Dan Hyde (Stage Manager) – has been involved on stage and off at Stage Coach Players for four years. He serves as a board member at Stage Coach and works as an IT Coordinator at Northern Illinois University. Dan wants to thank Ryan for the opportunity to be involved with such a wonderful show and thanks the cast for making his job easy.

Bridget Johnson (Sound) – has been involved in theater her whole life with different theater groups around the area including CCT, Dee's Darlings, Dee's Dreamers, and Annex Theatre Company. This will be her sixth production with Stage Coach and her third working tech. She has really enjoyed working with this fabulous cast! Enjoy the show!

Jan Kuntz (Producer) – recently retired from Indian Creek High School where she directed many plays and established many theater traditions. In 2008 she was honored as the recipient of the Excellence in Education Award for high school teachers in DeKalb County. As a member of the Stage Coach Players, Kuntz has directed several shows for the organization: *Jesus Christ Superstar*; *Guys and Dolls*; *Grease*; *Steel Magnolias*, *Bye, Bye, Birdie*; *Les Miserables*, *The Student Edition*; *Joseph and the Amazing Technicolor Dreamcoat*; and *Death of a Salesman*. She has served on the Stage Coach Board and was presented the Stage Coacher of the Year Award in 2005. Special thanks to Ryan for including her in his "Company" this summer. It has been great working with such talented and dedicated people.

Michael Landshaft (Lighting) – has been doing lighting for the past several years at Stage Couch Players. He is very excited about Company and hopes that all of you enjoy it as much as he enjoyed helping to produce it.

Ryan Morton (Director) – is thrilled to be directing his first show at Stage Coach Players. He previously directed *A Christmas Carol* while living in Oklahoma and has assistant directed on many productions, including 2012's *Cinderella* at Stage Coach Players. Ryan has performed in seven SCP shows since 2010, starting with *The 25th Annual Putnam County Spelling Bee* and most recently *Jesus Christ Superstar*, when he played Judas. He is a past board member and the current chair of the play reading committee. When not on stage, Ryan is the News Director for WSPY. He could not have directed this show without the tremendous work of his production team. Thanks to them, and also to all his previous directors who taught him so much over the years. Especially Lana and Jo, to whom this production is dedicated. And most importantly, Ryan thanks his parents for their advice and support and for planting this theatrical bug in him at such a young age.

Nika Plattos (Music Director) – has been a part of Stage Coach Players for the past four years. She is thrilled to be music director for her fourth show! Previously, she music directed *The Music Man*, *The 25th Annual Putnam County Spelling Bee*, and *A Funny Thing Happened on the Way to the Forum*. Nika made her first appearance on the Stage Coach stage last summer in *Guys and Dolls*, and she's also served on the Play Reading Committee for the past two years. When she's not at Stage Coach, Nika is a kindergarten through fifth grade music specialist at Kaneland McDole and John Shields Elementary Schools and is about to start her sixth year there. She also just started training to become a fitness coach at Synergy Kettlebell in Aurora, which is something she never thought she'd be adding to her résumé. Last, but certainly not least, she's in the homestretch of her Masters Degree courses and will officially have a Master of Arts in Special Education in December!

Special Thanks

Sarah Bliss, Marcia Brink, the DeKalb and Sycamore Farmers' Markets, Gloria Dennison, Ducky's Formal Wear, Michael Embry, Mark Hunyard, Immanuel Lutheran Church, Indian Creek High School, Indian Valley Theatre, Ty Johnson, Mark Mackeben, the Marketing Committee, Sarah Morton, Barb Nadeau, Tyler Needham, Dave Peason, Jacqueline Schultz, Mike Scorzo, Sweet Tomatoes in Aurora, the Sycamore Park District, Sycamore United Methodist Church, Todd Toles, Wendy Tritt, Anne Williams

Director's Notes

George Furth had an idea for a play: a series of one-acts about marriage, with a different person observing each scene. It didn't work, so he asked Stephen Sondheim and Harold Prince for their advice. They told him to put the scenes to music and use one central character to connect them. That revolutionary idea gave Broadway its first concept musical, *Company*.

There's no obvious plot, no chronology. It's just a series of stories and songs, seemingly unrelated to each other. In this production, to help connect the story, we set all the action inside our main character's head. These are Robert's memories, fantasies and visions, all converging on his 35th birthday. In each scene he remembers what it's like to be married and wonders if that's something he wants.

I initially wanted to direct *Company* because of Sondheim's beautiful score and Furth's skillful mix of comedy and drama. But the themes of the show also spoke to me. Although I was a decade younger than Bobby (and a couple generations behind the original 1970 production), I related to his dilemma. I frequently made excuses for why I couldn't pursue a relationship. I pined for women I couldn't have. I wrestled with what I really wanted in life.

Shortly after *Company* was chosen, my connection to Bobby no longer applied, as I fell in love with an amazing girl (who also happens to be my talented directing counterpart). But the beauty of this show is that audiences can still relate to it no matter where they are in life. The perpetual bachelor. The bickering couple. The nervous bride. The dotting husband. What remains constant throughout this show is that the couples truly do love each other, in good times and in bad. They profess their love in different ways, but its strength is always apparent. As a friend advises Robert, "Don't be afraid it won't be perfect. The only thing to be afraid of, really, is that it won't be."



a cooperatively owned natural foods market
offering groceries for a healthy lifestyle

M-F 9am-8pm/Sa-Su 9am-5pm

129 East Hillcrest . DeKalb

815/756-7044

www.ducksoupcoop.com

OPEN TO EVERYONE

Dm DeKalb Mechanical

HVAC - Refrigeration - Sheet Metal

24-Hour H.V.A.C. Service

Residential - Commercial

Industrial

Lift Truck Repair

339 Wurlitzer Drive • DeKalb, IL 60115

p: 815-756-6528 • f: 815-756-6529

www.DeKalbMechanical.com

These Good and Crazy People, Our Friends

Greg Anderson

American Midwest Bank

Aspen Chiropractic Clinic

Castle Bank

Cracker Jax

Stage Coach Business of the Year 2011

Gloria and Tom Dennison

Ducky's Formal Wear

Stage Coach Business of the Year 2012

Vernon and Teresa Haish

**Jeanna Hunter and Bob
Rosene**

**Doug and Sue Price
Johnson**

**Steven A. Johnson
Carder Travel**

The Junction Eating Place

**Stage Coach Board of
Directors**

Upstaging

Stage Coach Business of the Year 2011

**Yamber Real Estate and
Property Management, LLC**

Auditions for Annie and Christmas Carol

Auditions for
Annie and Christmas Carol
will be held

August 19 and 20
from 6:30 to 9:30 pm

at

Sycamore United Methodist Church
160 Johnson Avenue

Ages 7 and up are welcome

Thank you for attending today's performance of the great musical *Company*. I hope you will enjoy watching the show as much as we have enjoyed watching it come together over the past many weeks.

I would like to take a moment to do what I love most – talk about our theatre and the people who make it work so beautifully. Stage Coach Players has been providing live theatre entertainment for DeKalb County since 1947. This is a legacy our members are proud to carry on this year and will gladly carry on for years to come.

At our core is a 12 member Board of Directors. This group of actors, directors, and professional business people are charged with keeping our organization on task. Our monthly board meetings can be quite lively, to say the least.

Beyond the board however, is the heart of Stage Coach Players: the directors who spend months devoted to their show, working with each actor to provide just the perfect reflection of the character they have been chosen to play; the construction crew who turn an empty stage into a world of make believe eight times each year; the light design and light crew who hang lights, adjust lights, cue the lights and attend every performance just in case they are needed; the props people who hunt down just the perfect book, dish, coffee pot, telephone, you name it; the costumers, who find the right dress, suit, robe, wedding gown in our costume room. If it doesn't fit, they alter it. If they can't find it, they make it. If it needs repair during the show, they fix it. And every night they launder each costume to be ready for the next performance. The actors! From the day of audition to the last curtain call, their focus is to make their character believable. They dedicate six or more weeks of rehearsal to the show. Many a supper is gulped down at the theatre during the rehearsal schedule.

“Putting on a show” at Stage Coach is an endeavor of love and commitment. There may be a different motivation for each person involved, but the end goal is always the same:

To make sure we live up to the Stage Coach legacy handed from generation to generation since 1947.

My best

Anita Biletzky

SCP President 2013-2014

Your SCP Board of Directors for 2013:

Mike Scorzo, Vice President

Teresa Haish, Treasurer

Amy Whelan, Comptroller

Jeanna Hunter, Recording Secretary

Jan Booth, Corresponding Secretary

Susan Johnson, Immediate Past President

Board Members at Large:

Richard Christensen

Dan Hyde

Scott Montovon

Kim Moorman

Josh Smith

Upcoming Trips/Events: *Stop by the office to pick up brochures or call for information.*

September 7: The Devil in the White City tour.

September 10: Annual Dinner Meeting/trip reunion party.

September 14: To Master the Art, Water Tower Place.

October 6: Cyrano de Bergerac, Chicago Shakespeare Theater.

October 13: Otello, Lyric Opera of Chicago.

November 3-8: Christmas at the Biltmore Estate and Asheville.

November 13: Wicked! At Oriental Theater.

December: Hello Dolly!, Drury Lane (lunch and matinee).

December 07: Chicago Shopping Day.

December 26-January 3: New Years' Caribbean cruise.

2014

February 23-March 01: WWII Museum and New Orleans.

April: Bonnie SCOTLAND.

April: Cherry Blossom Special to Washington D.C.

April: Les Miserables, Drury Lane.

May 4: THE SOUND OF MUSIC.

June: Alaska and Denali LAND & SEA

July 21-25: Stratford Festival of Canada.

Contact Phyllis Carder or Steven Johnson for information



CARDER TRAVEL
LIMITED

CARDER TRAVEL LTD

Home of the NORTHERN ILLINOIS TRAVEL SOCIETY
2410 Sycamore Road, DeKalb, Illinois 60115
815-756-1547 • travelsociety@hotmail.com
Find us on Facebook, too!



Le print express™

Image is what it's all about!

2446 Sycamore Rd, DeKalb, IL

(Panda Express/LEZA Walls building)

TELEPHONE: 815-748-7121 FAX: 815-748-8068

Printing • Design • Gift Items

THE HOME OF

NewValues
magazine

PHONE: 815-748-7121

www.leprintdekalb.com

STAGECOACH PLAYERS

2013 Season

Company

Music and Lyrics by Stephen Sondheim • Book by George Furth
Directed by Ryan Morton • Musical Direction by Nika Plattos
Aug 8, 9, 10, 15, 16, 17, 2013 at 7:30 pm
Aug 11, 18, 2013 at 2:00 pm

The Lion in Winter

by James Goldman • Directed by David W. Booth
Sep 12, 13, 14, 19, 20, 21, 2013 at 7:30 pm
Sep 22, 2013 at 2:00 pm

Rope

by Patrick Hamilton • Directed by G. Scott Morris
Oct 10, 11, 12 17, 18, 19, 2013 at 7:30 pm
Oct 20, 2013 at 2:00 pm

Annie

Music by Charles Strouse • Lyrics by Martin Charnin
Book by Thomas Meehan • Directed by Sue Johnson
Nov 7, 8, 9, 14, 15, 16, 2013 at 7:30 pm
Nov 9, 10, 16, 17, 2013 at 2:00 pm

A Christmas Carol

Adapted by Amanda Smothers from a story by Charles Dickens
Directed by Amanda Smothers
Dec 12, 13, 14, 2013 at 7:30 pm
Dec 14,15, 2013 at 2:00 pm

Own Your Dream Home for only \$69,900!



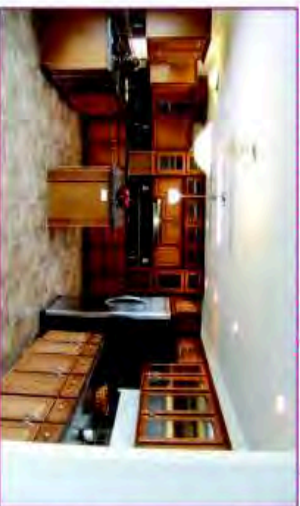
New Construction Prices from only \$69,900 - \$118,900

You'll Love Our Neighborhood!

Beautifully landscaped neighborhood where friendly residents still practice old-fashioned neighborliness. It's a supportive community reminiscent of years gone by. Community includes lighted sidewalks, curving tree lined streets, pool complex, flag park and picnic areas. Residents enjoy monthly coffees, game nights, dinner parties and day trips. Walk to shopping, banking, restaurants and medical facilities.



- Features Include:**
- 3 Bedrooms - 2 Baths
 - 2 x 6 Wall Construction
 - Gourmet Island Kitchens
 - Fireplaces - Skylights
 - Spa Baths with Whirlpools
 - Walk-In Closets
 - Laundry Rooms with Sinks
 - 2 1/2 Car Garages
 - Newly Sodded Lawns



Dream HOMES
USA

Toll Free 1-888-373-2604
1000 Chrysler Dr., Belvidere, IL

www.fourseasonsdreamhomes.com