

STAGE COACH PLAYERS PROUDLY PRESENTS

England Swings Like  
A Pendulum Do ...



# Rope

by Patrick Hamilton

Directed by G. Scott Morris

A dinner party for 13 guests...  
and 1 of them is dead.

*October* 10, 11, 12, 17, 18, 19, 2013 7:30 pm

*2 pm Matinee on October 20*

Call 815-758-1940 or visit  
[stagecoachers.com](http://stagecoachers.com) for tickets



Rope is presented by special arrangement with SAMUEL FRENCH, INC.

**STAGECOACH  
PLAYERS**

126 S. Fifth Street  
DeKalb, IL 60115

MORE ACTIVE.  
LESS LIMITS.



The Center for Joint Care at Kishwaukee Community Hospital is the **region's premier destination** for joint replacement procedures. Kish Hospital uses three-dimensional guided technology allowing our surgeons to be more precise in aligning the new joint with the entire limb.

Our program's evidence-based approach gets you back to your favorite activities quicker. Over 90% of our patients are discharged home within 2-3 days, without the need for an inpatient rehabilitation stay at a nursing home.

Learn more about the Center for Joint Care and hear patient success stories at [www.kishjointcenter.org](http://www.kishjointcenter.org) or call 815.748.2967.

CENTER FOR JOINT CARE



Stage Coach Players dedicate  
the 2013 season to the fond memory of

 Lana Marten 

# Rope

## SETTING

A room on the first floor of a house in Soho, London,  
shared by Brendan and Granillo

## ACT I

Mid-Evening, 1966

## ACT II

The scene is the same as before. No time has elapsed

## ACT III

The scene is the same as before. No time has elapsed

*There will be a 10 minute intermission between each act.*

STAGECOACH  
PLAYERS  


## SPECIAL THANKS

DeKalb Optometric

Maddie Disz and Keely Smith for agreeing to be “Roped.”

Will Ogilvie for being our best cheerleader during rehearsals.

Andee Larson and Pat Finn-Morris for providing the great set ideas.

Diane Lyon for providing supper during Tech rehearsal.

## CHARACTER LIST

|                                 |                     |
|---------------------------------|---------------------|
| Brandon .....                   | Josh Smith          |
| Granillo .....                  | A.J. Montgomery     |
| Rupert Cadell.....              | Tim Ball            |
| Kenneth Raglan .....            | Sean Henson         |
| Leila Arden .....               | Justyna Palasiewicz |
| Sir Johnstone Kentley III ..... | Stewart Ogilvie     |
| Mrs. Debenham.....              | Teresa Haish        |

## PARTY GUESTS

Keeley Smith  
Karen Mantz  
Maddie Disz

## PRODUCTION CREW

|  |  |
|--|--|
| Director .....                           | Scott Morris   |
| Associate Director / Dialect Coach ..... | Pat Finn-Morris  |
| Stage Manager .....                      | Anita Biletzky   |
| Light Design .....                       | Tom Grady  |
| Light Board Operator.....                | P. William Biletzky  |
| Set Design .....                         | Gregory Morris   |
| Costume Design .....                     | Annette Johns  |
| Properties .....                         | Aaron Schryver   |
| Hair Design .....                        | Keely Smith  |
| Make Up .....                            | Cheryl Johnson   |
| Set Construction .....                   | Amanda Montgomery, Andee Larson,<br>Bernie Schuneman, Bill Larson, Bob Cain,<br>Dave Booth, Dave Pearson, Eric Petersen,<br>Farley Stewart, Jan Booth, Josh Smith,<br>Justyna Palasiewicz, Patricia Finn-Morris,<br>Teresa Haish, Tim Ball, Tom Grady,<br>Anita Biletzky |

# MEET THE BEDLOZS!!



**NIGEL McHENDRIX** (Keyboard/Vocals) – Nigel was discovered talking and singing to himself in the worst back alley of Liverpool. He is delighted to be anywhere else. Reunited again with the surviving members of the Bedlozs, he hopes they will forget he killed the others.

**FRANK STONE** (Rhythm Guitar/Background Vocals) – Frank was discovered by Alistair playing in an unknown Australian children’s act called “The Wiggles”, and he was more than happy to return to London to play with The Bedlozs, not to mention the all you can eat fish and chips at The Hill O’ Beans Diner in Yorkshire. (If you’ve ever eaten Australian cuisine, then you would understand)

**ALISTAIR HUMBLEBERRY** (Lead Guitar/Background Vocals) – As the sole surviving member of the original Bedlozs lineup, Alistair hasn’t forgotten Nigel killed all the others; he just doesn’t care. Believing them to be “nuthin’ but a bunch of teetotalin’ wankers” it’s the reason Nigel was hired in the first place.

## PERFORMANCE PLAYLIST

Love, Interrupted

England Swings

Games People Play

White Rabbit (inst)

After Midnight

Glory Bound

# GREEN ROOM

**Tim Ball** has been a member of Stage Coach since 1989 and has been involved in many shows on and offstage, most recently as director of *Not Now Darling* last fall. His favorite roles include Fred in *A Christmas Carol* and Gooper in *Cat On A Hot Tin Roof*. His favorite director experiences were *Postmortem*, *Arsenic and Old Lace*, and *Not Now Darling*. He will be directing *Ten Angry Jurors* for SCP next spring. Thanks to Tammy for all her love and support.

**Teresa Haish** discovered a new hobby in acting 3 years ago in her favorite role to date as Claire in *Rumors*. You may also have seen her in *Play It Again Sam* (Linda), or *The Dining Room*. Teresa has been married to her charming husband for 18 years. She has worked for Chicago Title for over 26 years currently serves as Treasurer for SCP and when not at the theatre enjoys reading, yoga and traveling.

**Sean Henson** has been a Stage Coach Player member for the last 10 years as a designer, director, actor and puppeteer. His previous set design work was most recently in this summer's *Company* and prior to that, in the SCP production of *Private Eyes*.

**A.M. Montgomery** is fairly new to Stage Coach Players and training in acting. A.M.'s debut in SCP was last season as a featured extra in *Much Ado About Nothing*, directed by G. Scott Morris, followed by the role of Cpry in *Private Eyes*, directed by Josh Smith. A.M. would like to give a special thanks to Pat and Scott for coaching and encouragement through this challenging experience, and to the hard working awesome cast for the bonding through this theatrical endeavor. A.M. is locally and community oriented with work and training in the martial arts and acting. A.M. gives a shout out to Dan Sharp, partner, muse and best bud.

*Rope - not the cowboy's prop.*



Jerry & Annette Johns



**Stewart Ogilvie** has been in the theatre for many years, He taught theatre for 14 years and currently teaches theatre/acting on a freelance basis, acts and directs at various venues/media, and substitutes in the DeKalb School District. He holds a degree in Theatre from NIU and studied at UW La Crosse as well as Second City and Victory Gardens Theatre. He has studied and performed in Chicago and Los Angeles and performed in and directed more than 50 plays and 10 films as well as many voice overs and commercials. He was seen most recently at Stage Coach Players earlier this year as the Reverend Jason Bosley in *The Robin Hood Capers*.

**Justyna Palasiewicz** played a saloon girl in a western comedy as a high school freshman and later as a high school senior, played Patricia Purdy in *Murder Runs In The Family*. She is very excited to enjoy her first role with Stage Coach Players. Justyna is a second year law student at NIU, which seems to consume her life. When not at school or at the theatre, she enjoys spending time with her family, and thanks them for their support.



*Funeral Directors*

**Richard N. Anderson**

**Barry S. Melton**

*Service Assistant*

**Mervin V. Mathison**

*Advanced Planning*

**Candy L. Anderson**

Tel: (815) 756-1022  
[www.andersonfuneralhomeltd.com](http://www.andersonfuneralhomeltd.com)

2011 South Fourth Street  
DeKalb, Illinois 60115

**Josh Smith** has performed for Stage Coach Players as Allen Felix in *Play It Again Sam*, as Ken in *Rumors* and as Miles Gloriosus in *A Funny Thing Happened On The Way To The Forum*. He currently serves on the SCP Board of Directors. Josh has many interests outside of the theatre and enjoys them immensely, when given the opportunity to persue them.



# JOINING THE PARTY

**Madeline Disz** is an art major at Kishwaukee College and this is her 5<sup>th</sup> play for SCP. She was last seen in *Skrek The Musical* as the Pied Piper and a Duloc dancer, She is happy to be a part of this cast.

**Karen Mantz** has been cast and crew for SCP productions since 2010 and her favorite performance was *Wait Until Dark*. Karen hopes you enjoy the show!

**Keely Smith** has been involved with SCP since 2008, volunteering her services behind the curtain in hair, makeup and wigs for many shows. On stage Keely was seen earlier this summer as Kathy in the musical *Company*.

*Break a Leg!*

The logo for ILNI Security Systems, Inc. features the letters "ILNI" in a large, bold, sans-serif font, with "SECURITY SYSTEMS, INC.®" in a smaller font to its right. Below the logo, the words "RESIDENTIAL" and "COMMERCIAL" are separated by a small square.

RESIDENTIAL ■ COMMERCIAL

**Gene R. Deisz**  
815/895-2476  
[www.alarm-u.com](http://www.alarm-u.com)

*We mean to Alarm-U*

The logo for G's R Plumbing & Heating features the letters "G's R" in a large, stylized font, with "PLUMBING & HEATING" in a smaller font below it. A graphic of a wrench and a pipe is integrated into the design.

24-Hour  
Emergency  
Service

**815-758-5228**  
Serving DeKalb County



# CREW

**G.Scott Morris – Director.** *Rope* marks Scott's 32<sup>nd</sup> year as an unrepentant SCP player, actor, director, scene designer, board member, set builder, rest room cleaner, and general hanger-on. Somewhere along the way he pick up a SCOTY (1988) and grew old enough to be given a Lucille Aikens Lifetime Achievement award in 2011. He graduated from the former NIU Theater Department in 1988 with a BA in acting/directing and has acted/directed (also set builded, rest room cleaned, script-writed and hanged around) in professional, educational, and community theater through the years, sometimes with his lovely wife (also an actor) Patricia Finn-Morris with whom he lives in DeKalb along with an elderly, gentleman mutt, a mouthy beagle, and an impossible cat. Recent directing assignments include last season's *Much Ado About Nothing*, *Waiting For Godot* for Annex Theatre, *The Masque of The Bells* (with co-director Jan Kuntz) for the DeKalb Library's Big Read program and the 2009 live radio broadcast of C. Tango Rye's *The Voices in The Void* for SCP's Radio Workshop. Other favorite productions include *Camelot* (SCP at South Point), *Of Mice and Men* (SCP), *The Elephant Man* (SCP), *Sea Marks* (three productions), *Macbeth* (Pendragon productions) and *The Four Poster* (SCP). Reluctantly forced to work for a living, Scott is employed as the Audio/Visual Department supervisor at NIU's Holmes Student Center.

**Patricia Finn-Morris – Associate Director/Dialect Coach** made her Stage Coach (and acting) debut in the 1981 production of *The Real Inspector Hound*. In ensuing years, she appeared in *Look Homeward, Angel; Romantic Comedy; The Foreigner, The Four Poster; Lunch Hour; The Hollow, and Christmas Carol*. She has worked backstage on a number of productions, has directed (*The Chalk Garden, Corpse*), has served on the SCP board of directors and is a past SCOTY winner. Patricia holds an MFA in acting from NIU's School of Theatre and Dance. Patricia lives in DeKalb with her husband, Scott, their two dogs and magic cat.



**Anita Biletzky – Stage Manager** is a 22 year member of Stage Coach Players and is often found working behind the scenes as Producer, Stage Manager, or Director (*Father Of The Bride* in 2011 and *Robin Hood Capers* in 2013). In 2001 she received the SCOTY award and she is currently President of the SCP Board of Directors. When not playing at the theatre, Anita loves nothing more than hanging out with her grandkids, Gordy, Will, Spencer, Clara and Kenny.

**Annette Johns – Costume Design** has been a Stage Coach member for over 30 years, and has acted in many SCP shows including favorites *Foxfire* and *The Importance of Being Earnest*. She has served in several capacities on the board and has earned a Special Award, SCOTY, and the Lucille Aikins Lifetime Achievement Award. She and husband Jerry initiated an endowment with the DeKalb Community Foundation. Annette has worked as hard backstage as on, especially with properties and costuming. She says it was fun to revisit the 1960's in *Rope*.

**Tom Grady – Light Design** (note from Stage Manager: a man of few words, Tom is the go-to guy for light design and sound. His tireless efforts to light the stage, provide the needed sound effects and patiently train the newcomers is very much appreciated by all who have worked with him.)


# STAGECOACH PLAYERS



a cooperatively owned natural foods market  
offering groceries for a healthy lifestyle

M-F 9am-8pm/Sa-Su 9am-5pm  
129 East Hillcrest . DeKalb  
815/756-7044





[www.ducksoupcoop.com](http://www.ducksoupcoop.com)  
**OPEN TO EVERYONE**



Voted Best  
Physical Therapists!

**Freedom to Move -  
We work for you and the doctor of your choice!**

*Your choice of 4 locations:*  
Resource Parkway - DeKalb    Lincoln Highway - DeKalb  
Rochelle    Genoa

[northernrehabpt.com](http://northernrehabpt.com) 815.756.8524    

# DIRECTOR'S NOTES

I'm sorry to say that those of you who were expecting to see the theatrical version of Alfred Hitchcock's Film Rope are not going to see it here. (Not to mention that lightning would strike me if I pretended to have anything like Hitchcock's prodigious talents as a director). Hitchcock changed the location from London to New York, shuffled the characters, rewrote all the dialogue, and moved the time frame from 1929 to 1948. We simply could not compete with that. What we do have is Patrick Hamilton's play, written in 1929 (and in our case updated to early 1960's London), a macabre dinner party in which some very colorful characters dine off a chest which contains the body of a young student who has been murdered before a single line of the play is spoken, and to top it off: we already know who did it! What's left? What's left is "Why they did it" and "Will they get away with it?". Thereby, my friends, hangs a tale of love, redemption, and as our drunken friend Rupert might describe it, a skewed morality tale about the difference between Law and justice ...

## ENJOY DINNER AND A SHOW!



### Rosita's Mexican Restaurant

*Located just around the corner  
from Stagecoach Theatre!*

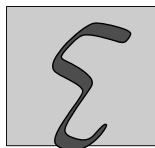
642 East Lincoln Highway  
DeKalb, Illinois 60115

815.756.1201

### Eduardo's Restaurant

214 East Lincoln Highway  
DeKalb, Illinois 60115

815.758.2677



**Eduardo's**  
R-e-s-t-a-u-r-a-n-t

Show your Rope ticket at either  
Eduardo's or Rosita's and receive a

# FREE APPETIZER

with purchase of a meal.

Appetizer value up to \$7.00. Valid from Thursday, Oct. 10th to Sunday, Oct. 20th. Dine-in only. One free appetizer per table per visit.

# STAGECOACH PLAYERS



**THANK YOU FOR ATTENDING  
TODAY'S PERFORMANCE OF ROPE!  
WE APPRECIATE YOU CHOOSING  
STAGE COACH PLAYERS FOR YOUR  
LIVE THEATRE ENTERTAINMENT.**

**Your SCP Board of Directors for 2013:**

Anita Biletzky, President  
Mike Scorzo, Vice President  
Teresa Haish, Treasurer  
Amy Whelan, Comptroller  
Jeanna Hunter, Recording Secretary  
Jan Booth, Corresponding Secretary  
Susan Johnson, Immediate Past President

**Board Members at Large:**

Josh Smith  
Dan Hyde  
Richard Christensen  
Kim Moorman  
Scott Montavon

Celebrating  
25 Years  
in Business

American  
Title  
Guaranty, Inc.



## AMERICAN TITLE GUARANTY, INC.

2045 Aberdeen Ct., Ste. B  
Sycamore, IL 60178  
Phone: 815-756-3611

ASK YOUR LENDER, REALTOR  
AND ATTORNEY TO CALL US  
FOR YOUR REAL ESTATE  
TITLE INSURANCE NEEDS

# DM DeKalb Mechanical

HVAC - Refrigeration - Sheet Metal  
24-Hour H.V.A.C. Service  
Residential - Commercial  
Industrial  
Lift Truck Repair

339 Wurlitzer Drive • DeKalb, IL 60115  
p: 815-756-6528 • f: 815-756-6529  
www.DeKalbMechanical.com

Sycamore DeKalb Genoa Elburn Sandwich Leland Serena

# NB&T

banknbt.com  
815-895-2125

Member FDIC

# HyVee

EMPLOYEE OWNED

*A helpful smile  
in every aisle.*

2700 DeKalb Ave.  
Sycamore  
815-756-6174



www.hy-vee.com  
Visit us online today!



Celebrating our second year  
in partnership with  
Chef Chad and Manager Rob

## WELCOME Stage Coach Theatre Patrons

Join us for dinner before theater.  
Return afterward to complete your evening.  
Dinner is served from 4:00 pm on.  
The kitchen closes when the orders stop.

226 East Lincoln Highway • Downtown DeKalb  
815.217.0990 • Reservations suggested  
www.tapalaluna.com




[www.leprintdekalb.com](http://www.leprintdekalb.com)

**Le  
print  
express**



*Image is what it's all about!*



*2446 Sycamore Road  
DeKalb, IL 60115*

**815-748-7121**

**Fax: 815-748-8068**

THE HOME OF

**NewValues**  
magazine

[NewValuesMagazine.com](http://NewValuesMagazine.com)

# STAGECOACH PLAYERS

## 2013 SEASON

### Rope

by Patrick Hamilton • Directed by G. Scott Morris  
Oct 10, 11, 12 17, 18, 19, 2013 at 7:30 pm  
Oct 20, 2013 at 2:00 pm

### Annie

Music by Charles Strouse • Lyrics by Martin Charnin  
Book by Thomas Meehan • Directed by Sue Johnson  
Nov 7, 8, 9, 14, 15, 16, 2013 at 7:30 pm  
Nov 9, 10, 16, 17, 2013 at 2:00 pm

### A Christmas Carol

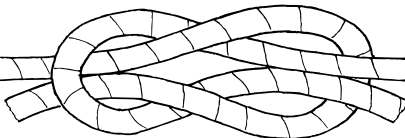
Adapted by Amanda Smothers from a story by Charles Dickens  
Directed by Amanda Smothers  
Dec 12, 13, 14, 2013 at 7:30 pm  
Dec 14, 15, 2013 at 2:00 pm

## YOU HAVE ROPED US INTO ANOTHER GREAT SHOW!

**Greg Anderson**  
**American Midwest Bank**  
**Aspen Chiropractic Clinic**  
**Castle Bank**  
**Cracker Jax**  
*Stage Coach Business of the Year 2011*  
**Gloria and Tom Dennison**

**Ducky's Formal Wear**  
*Stage Coach Business of the Year 2012*  
**Vernon and Teresa Haish**  
**Jeanna Hunter and  
Bob Rosene**  
**Doug and Sue Price  
Johnson**  
**Steven A. Johnson  
Carder Travel**

**The Junction Eating Place**  
**Stage Coach Board of  
Directors**  
**Upstaging**  
*Stage Coach Business of the Year 2011*  
**Yamber Real Estate and  
Property Management,  
LLC**



# Own Your Dream Home for only \$69,900!



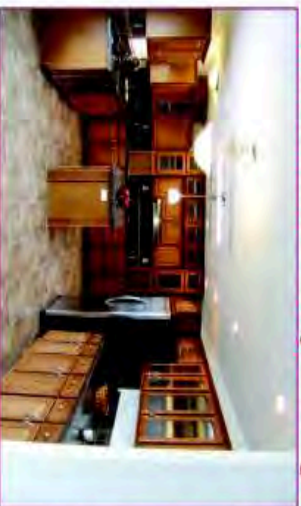
*New Construction Prices from only \$69,900 - \$118,900*

## *You'll Love Our Neighborhood!*

Beautifully landscaped neighborhood where friendly residents still practice old-fashioned neighborliness. It's a supportive community reminiscent of years gone by. Community includes lighted sidewalks, curving tree lined streets, pool complex, flag park and picnic areas. Residents enjoy monthly coffees, game nights, dinner parties and day trips. Walk to shopping, banking, restaurants and medical facilities.



- Features Include:**
- 3 Bedrooms - 2 Baths
  - 2 x 6 Wall Construction
  - Gourmet Island Kitchens
  - Fireplaces - Skylights
  - Spa Baths with Whirlpools
  - Walk-In Closets
  - Laundry Rooms with Sinks
  - 2 1/2 Car Garages
  - Newly Sodded Lawns



*Dream HOMES USA*

**Toll Free 1-888-373-2604**  
1000 Chrysler Dr., Belvidere, IL

[www.fourseasonsdreamhomes.com](http://www.fourseasonsdreamhomes.com)