

Design & Printing

www.leprintdekalb.com



COPIES • PRINTING • DESIGN

Blueprint Services • Promotional Items • T-Shirts **NEW**

2 Locations:

Inside Wal-Mart Supercenter

2300 Sycamore Road
DeKalb, Illinois 60115

TEL: 815-748-7121

FAX: 815-748-8068

Downtown Sycamore

308 West State Street
Sycamore, Illinois 60178

TEL: 815-895-4737

FAX: 815-895-4743

Design through printing... we can do it all!

TOLL FREE: 877-734-1333

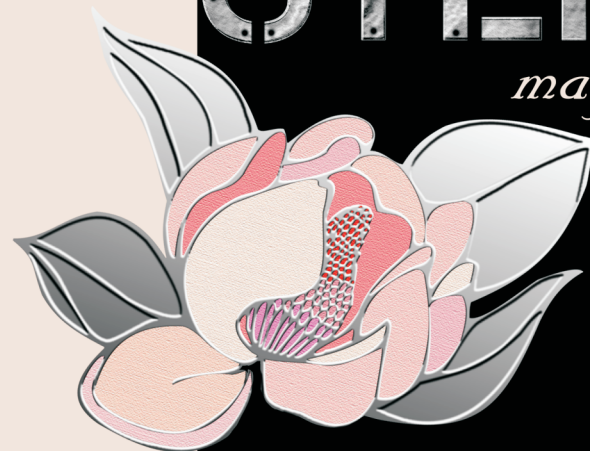
**STAGECOACH
PLAYERS**

By Robert Harling

Directed by Jan Kuntz

Performed in cooperation with Dramatists Play Service

STEEL
magnolias



JULY 9, 10, 11, 16, 17, 18

Curtain 8:00 pm

JULY 19, 2009

Curtain 2:00 pm

Stagecoach Players Theater
126 S. Fifth St., DeKalb, IL
Box Office: 815-758-1940

Sponsored by



2180 Oakland Place
Suite A
Sycamore, IL 60178

Originally produced by the
W.P.A. Theatre
New York City, 1987
(Kyle Renick, Artistic Director)

WWW.STAGECOACHERS.COM

UPCOMING SHOWS FOR 2009

Our 63rd Year of Production!

Hello, Dolly!

Directed by Mike Scorzo
August 6 to 16, 2009

Bus Stop

Directed by Barbara Andree
September 10 to 20, 2009

Nunsense

Directed by Orv Kersten
October 8 to 18, 2009



Since the Middle Ages, the act of giving flowers in the theater has been an honored tradition. Stagecoach is now making it easy to give your favorite thespian (or spouse or friend!) a beautiful gift of flowers! During intermission there will be roses and other flowers available to purchase in the lobby that have been provided by either Kar-Fre Flowers of Sycamore or Glidden Campus Florist of DeKalb. The proceeds will go to help maintain and improve our building.

We Stagecoachers always appreciate your support -

THANKS!

SPECIAL THANKS

to

 *the*
GLIDDEN
campus florist

for donating the
flowers for sale
at intermission

SPONSORED BY

DOLCE VITA
SALON & DAY SPA

815-756-1414

2180 Oakland Place
Suite A
Sycamore, IL 60178

Annex Theatre Company Dreamers Theatre Group

Legend of Sleepy Hollow

September 21 to 27, 2009 at the Egyptian Theatre
Presented by the Annex Theatre Company
For details, go to www.annextheatrecompany.org

Beauty and the Beast Jr.

November 8 to 15, 2009 at the Egyptian Theatre
Presented by the Dreamers Theatre Group
For details, go to www.dreamerstheatrecompany.org



DeKalb's Personality Restaurant
 Sun thru Wed - 6 am to 2 am
 Thursday - 6 am to 3 am
 Friday - 6 am to 4 am
816 West Lincoln Highway
758-5441
 Homemade Soups Served Daily

Katherine.Gannon.net

RE/MAX® Experience
 815-757-3515

Break A Leg!

**KLEIN, STODDARD, BUCK
 WALLER AND LEWIS LLC**

ATTORNEYS AT LAW

James A. Stoddard

2045 Aberdeen Ct., Suite A
 Sycamore, IL 60178
 815-748-0380

Becky Beck's Jewelry Store

303 East Hillcrest Drive, DeKalb, Illinois 60115
 815-758-3800

MATTRESS

Warehouse
 of DeKalb

www.dekalbmattress.com

SHOWROOM:

1224 E. Lincoln Hwy. (Rt. 38), DeKalb, IL
815-756-4999

Ease pain and discomfort with

**MASSAGE
 THERAPY**



\$30 1/2 hour
 or
\$50 1 hour

For an appointment please call
815.748.8399.

KidHealth System
UNLIMITED PERFORMANCE
 Rehabilitation & Sports Medicine
A department of Kishwaukee Community Hospital

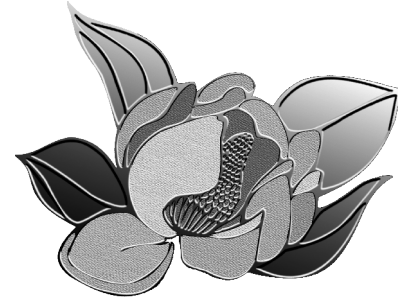
www.unlimitedperformance.org

SPECIAL THANKS

to

**Kar-Fre
 Flowers**

for providing the
 flowers for sale
 at intermission



STEEL MAGNOLIAS

Setting: Truvy's beauty shop in Northern Louisiana.

Act I

Scene 1 Spring
 Scene 2..... Later in the year, Winter

Intermission

Act II

Scene 1 Eighteen months later, Summer
 Scene 2 Autumn

There will be gunshot sound effects used during the performance.



a cooperatively owned
 natural foods market
 offering groceries for
 a healthy lifestyle

M-F 9am-8pm/Sa-Su 9am-5pm
 129 East Hillcrest . DeKalb
 815/756-7044

www.ducksoupcoop.com
OPEN TO EVERYONE



Ben Gordon Center

**Confidential Counseling for
 Children, Teens & Adults**

Substance Abuse and DUI Services
 ADD & ADHD Services for Youth & Adults

E.A.P. Services

Individual, Couples & Family Counseling
 24 Hour Emergency & Urgent Care

BGC RESPONSE: 1-866-BGC-0111

12 Health Services Dr. 100 S. Latham St., Ste. 204
 DeKalb, IL Sandwich, IL
 815-756-4875 815-756-7544

TRUST THE EXPERTS IN BEHAVIORAL HEALTHCARE

CAST LIST

(in order of appearance)

Annelle Elise Johnson
Truvy Barb McCaskey
Clairee Jan Booth
Shelby Callie Johnson
M'Lynn Paula Tsiagalis
Ouiser D'Ann Hamilton

DIRECTOR'S NOTES

Losing a loved one is an experience filled with pain and heartbreak. Robert Harling's play *Steel Magnolias* is the result of his devastating loss of his sister as he struggled to cope with her death. This cathartic writing has given to us a beautiful story of six Southern women who have a bond that transcends normal friendships.

Steel Magnolias is the story of Truvy, Annelle, Clairee, Shelby, M'Lynn, and Ouiser.

It is a story of a beautician, a caterpillar waiting to become a butterfly, a Southern Lady, a mother, a daughter, and a cantankerous curmudgeon who has a heart of gold.

It is the story of friendship and camaraderie, love and compassion, heartbreak and healing

It is the story of your mothers, your sisters, your wives, your daughters, your aunts, and your friends.

It is the story of you and me.

To all of the men who think that this story is only for women, reconsider that thought. It is also the story your mothers, your sisters, your wives, your daughters, your aunts, and your friends.

I have been incredibly privileged to have worked with an extremely talented cast. During rehearsals I would marvel at their strength and conviction to tell this story with grace and dignity. These women are as admirable as the women in the play, and for me they are true *Steel Magnolias*.

LIST OF ADVERTISERS

Stagecoach Players offers sincere thanks to our advertisers (listed below) for their support of our programs.

We encourage everyone to acknowledge their support by placing your business with them and recommending them to your friends.
Thanks!

American National Bank of
DeKalb County

Anderson Funeral Home,
Ltd.

Becky Beck's Jewelry
Store

Ben Gordon Center
Dolce Vita

Dorothy Hitzeroth

Duck Soup Coop

Gavin Wilson Insurance

G's R Plumbing

Illini Security Systems, Inc.

The Junction Eating Place

Katherine Gannon

Klein, Stoddard, Buck
Waller and Lewis, LLC

Le Print Express

Mattress Warehouse of
DeKalb

The National Bank & Trust
Company

Resource Bank

Studio One Salon & Spa

Sycamore Auto Bath

Sycamore Parkway
Restaurant

Taxco Mexican Restaurant

Unlimited Performance
Massage Therapy

*Laughter through tears
is my favorite emotion.*

Jerry & Annette Johns
Stage Coach Board of Directors
Paper Doll House Posse

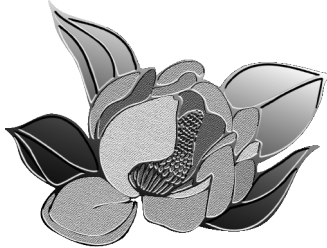
Greg Anderson
Jan & Dan Kuntz

CHILDREN'S THEATER WORKSHOP

Every Saturday
September 12
to
November 7
12:00 - 4:00 p.m.

Stagecoach Theater
126 S. Fifth Street
DeKalb

WATCH OUR WEBSITE FOR FURTHER DETAILS
www.stagecoachers.com



605 E. STATE STREET
SYCAMORE, IL
(815) 895-6700



Renew - Relax - Refresh

815-758-4508

1007 N. First St. ~ DeKalb, IL

StudioOneSalonSpa.com

PRODUCTION STAFF

Director Jan Kuntz
 Assistant Director / Stage Manager Bill O' Hagan
 Producer Jeanna Hunter
 Lighting Designer Diana Zwinak
 Light Board Operator Bill Kator
 Set Design Josh Near
 Sound Technician Sean Fitzpatrick
 Master Carpenters Dave Pearson, Dan Kuntz,
 Bill O'Hagan
 Props Leslie Shive, Kerig Anthenat
 Costumes Diane Luckenbill
 Set Dressing Marcia Brink
 Set Building and Painting Kerig Anthenat, Jan Booth,
 Marcia Brink, Bob Cain, Sean Fitzpatrick,
 D'Ann Hamilton, Kyle Janekowski, Elise Johnson,
 Morris Jones, Dan Kuntz, Jan Kuntz, Lana Marten,
 Josh Near, Bill O'Hagan, Donna O'Hagan,
 Dave Pearson, Denny Vaupel, Bob White,
 Jackie Zimmerman
 Wigs Denny Taylor
 PowerPoint Design Jennifer Rhodes
 PowerPoint Operator Allison Hunter-Rosene
 Special Thanks Barb Andree, Tim Ball,
 Laurie Bradt / Timeless Interiors, Kathy Cain,
 Dolce Vita, Patricia Finn Morris, Katherine Gannon,
 Tom Grady, Patty Greenlee, Sean Henson, Indian
 Creek High School Theater and Music Departments,
 Joanne Landshaft, Patty Pearson, Gloria Tyler,
 Wredling Middle School

American National Bank of DeKalb County • 815-756-1444
 Taxco Mexican Restaurant • 815-895-2545

GREENROOM



Jan Booth (Clairee Belcher)

Jan has been involved with Stage Coach Players for many years, both on and off stage. Her most recent work has included stage managing for two of her favorite shows - *Over the River and Through the Woods* and *Forever Plaid*. She also served as props mistress for last season's *Heaven Can Wait*. Some of the shows in which Jan has appeared onstage include SCP's *Stepping Out*, *Rumors*, *Murder on the Rerun*, and *Postmortem*. She has been a member of the SCP Board of Directors and has lent her assistance in many capacities, including set construction, lights, sound and fly crew. Jan is a fifth grade teacher and canine agility trainer, and lives in DeKalb with her husband, David, and their two dogs and three cats.



D'Ann Hamilton (Ouiser Boudreaux)

D'Ann is delighted and honored to be involved with this production. D'Ann lives in DeKalb and has been active in Stage Coach Players, both onstage and off, since the 1980s. Favorite roles include Dotty in *Noises Off*, Linda Loman in *Death of a Salesman*, Mrs. Kendal in *Elephant Man*, Seedy Schleppler in *The Saloonkeeper's Daughter*, and Suzette in *Don't Dress for Dinner*. She is a librarian for Fabricators and Manufacturers Association, Intl. in Rockford and has appeared in several shows there as well. She thanks the cast and crew of *Steel Magnolias* for their hard work, the audience for supporting the arts, and Bob for being a steel magnolia in his own way.



NB&T
The National Bank
& Trust Company
MEMBER FDIC

888-895-2125
WWW.NABATCO.COM

SYCAMORE DEKALB GENOA ELBURN LELAND SERENA

Best of Luck!



G's R

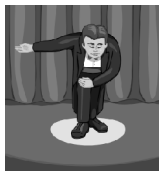
PLUMBING & HEATING

24-Hour
Emergency
Service


815-758-5228

Serving DeKalb County

You Want
Great
Performance?
You've got it.




Gavin Wilson



Customer service
is my greatest asset.

1950 DeKalb Ave.
Sycamore, IL
(815) 758-4540

Home - Health - Life
Investments - Auto - Annuities



COUNTRY

FINANCIAL

0109-240

Break a Leg!



ILNI SECURITY
SYSTEMS, INC.®

RESIDENTIAL ■ COMMERCIAL

Gene R. Deisz

815/895-2476
www.alarm-u.com

We mean to
Alarm-U





RE/MAX®
Experience

Each Office Independently Owned and Operated

Dorothy Hitzeroth

Serving DeKalb County
for over 12 years!




Cell: 815-757-5217

E-mail: dorothymovesyou@yahoo.com
Website: www.dorothymovesyou.com
Fax: 815-895-0800 • 1430 DeKalb Ave. • Sycamore



AUDITIONS!

Keep Christmas in your heart all the year through!

Audition for a Stage Coach Players tradition,
Charles Dickens' *A Christmas Carol*.

Auditions will be held Monday and Tuesday,
October 19 and 20, 2009 from 7:00 to 9:00 pm at
126 S. Fifth St., DeKalb (the Stage Coach Theatre).

Check our website for further details...
www.stagecoachers.com



SYCAMORE AUTO BATH

1775 DeKalb Avenue
Open 24 hours a day
Next to Bemis

ANDERSON

F U N E R A L H O M E , L T D .

Funeral Directors

Richard N. Anderson Barry S. Melton

Service Assistant

Mervin V. Mathison

Tel: (815) 756-1022
Fax: (815) 756-1002

2011 South Fourth Street
DeKalb, Illinois 60115



Elise Johnson (Annelle Dupuy-DeSoto)

Steel Magnolias marks Elise's fifth season with SCP. How fitting that she should be teaming up with Jan Kuntz again, her first SCP director back in 2004 with *Les Miserables: School Edition*. During her time at SCP, she has racked up several memorable performances as Gloria Rasputin in *Bye, Bye Birdie*, Sylvia in *Sylvia*, Gertrude Styles in *Wild Dust*, and Sara McKeon in *Earth and Sky*. When not performing, Elise has also enjoyed the wonderful world of choreography with her fabulous partner-in-crime, Kristin Taylor. They've worked on *High School Musical*, *Annie Get Your Gun*, *Bye, Bye Birdie* and *The King and I* as well as *Beauty and the Beast* and *Les Miserables: School Edition* at DeKalb High School. Last fall, Elise directed her first production at SCP with *Over the River and Through the Woods*. It was a truly amazing experience, so she hopes to direct more in the future. Elise has a B.A. in Theatre Studies from NIU and is currently working towards her secondary teacher certification in English. *Steel Magnolias* has been another extremely memorable production - memorable characters, memorable moments and most of all, memorable friends.



Callie Johnson (Shelby Eatenton)

Callie just finished her freshman year at Columbia College in Chicago, where she is studying musical theatre. This past year, she was in three shows, including *The Laramie Project* at DePaul University. Some of her favorite past roles include Lola in *Damn Yankees*, Polly in *Crazy for You*, Sandy in *Grease*, and now, of course, Shelby in *Steel Magnolias*. She is so grateful to Jan for casting her, and

she is so glad she auditioned. She loves her cast, and has learned so much from her time with them. Callie would like to say hello to her best friend Val, She's the best!! And to the audience, she hopes you all have lots of tears, and lots of laughs! Enjoy the Show!



Barb McCaskey (Truvy)

Barb is delighted to be part of this terrific group of women and this wonderful story. Most recently, Barb was seen as Anna in *The King and I* at Stagecoach in March. Favorite roles include Eva Peron in *Evita*, Glinda/Aunt Em in *The Wizard of Oz*, Arlene in *Baby*, the Narrator in *Joseph and the Amazing Technicolor Dreamcoat* and the Witch and the Baker's Wife in *Into The Woods*. Barb has had the good fortune to appear at Clocktower and New American Theaters in Rockford and Steel Beam Theater in St. Charles. She works part-time for DeKalb County Circuit Clerk Maureen Josh and is mother to son Conor, bound for the University of Notre Dame this fall. Dear husband George could do a workshop for the spouses of the Steel Magnolias! Thanks to Jan and Bill for everything.



Paula Tsiagalis (M'Lynn Eatenton)

Paula is thrilled and honored to be onstage with such an amazing group of women! She has enjoyed being a part of SCP for twenty-six years, having started with them in college. She has also been seen on stage at St. Charles' Steel Beam Theater. When not on stage, she can be found managing the Sycamore Parkway Restaurant. She thanks her husband, Angelo and children Giorgio and

Samantha for their inspiration and support. She sends a special thanks to director Jan for casting her in this moving play.

Jan Kuntz (Director)

Jan Kuntz currently teaches at Indian Creek High School where she has directed many plays and established many theater traditions. In 2008 she was honored as the recipient of the Excellence in Education Award for high school teachers in DeKalb County. As a member of the Stage Coach Players, Jan has directed several shows for the organization: *Bye, Bye Birdie*; *Les Miserables: The Students Edition*; *Joseph and the Amazing Technicolor Dreamcoat*; and *Death of a Salesman*. She has served on the Stage Coach Board and was presented the Stage Coacher of the Year Award in 2005. She is grateful to the Stage Coach Board for allowing her this opportunity to direct *Steel Magnolias*. Special thanks to assistant director Bill for his patience throughout this process and also thanks to her family for their continued support of her activities in the theater.

Bill O'Hagan (Assistant Director)

Bill has had a wonderful time working with the great ladies of Chinquapin parish. This is his second year of involvement with SCP. When not doing "whatever needs to be done for the show," Bill teaches middle school drama and technology. Bill lives in Sycamore with his own unique steel magnolia, his amazing wife Donna, along with daughters Sarah and Katie and assortment of pets. He is used to being the token male. Bill would like to thank Jan for selecting him as assistant director and allowing him to use his talents to help the show. Jan helped him realize as a Stage Coacher how lucky he was. She was there when this wonderful production drifted into his life and she will be there when it drifts out. *Steel Magnolias* has been one of the most precious experiences of his stage life thus far.